

# WEC NEW DASHBOARD

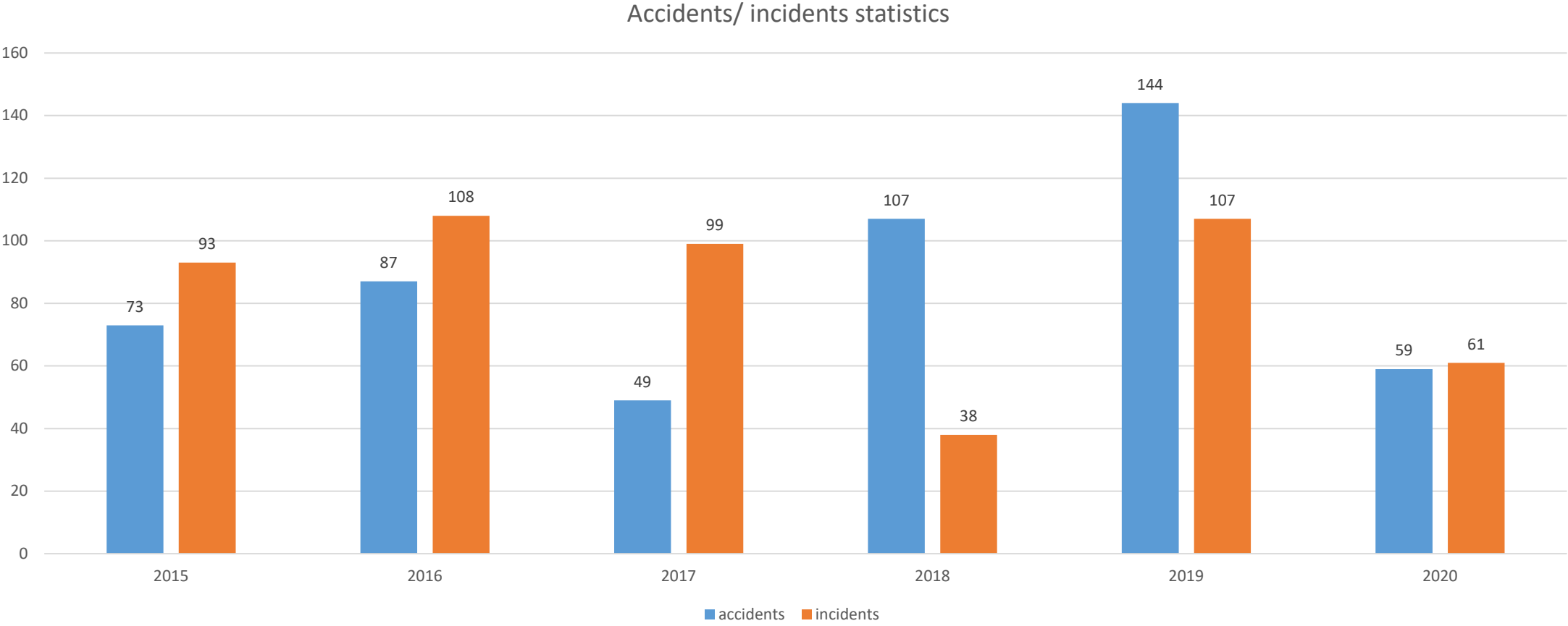
September 2020

# SHEQ Scorecard

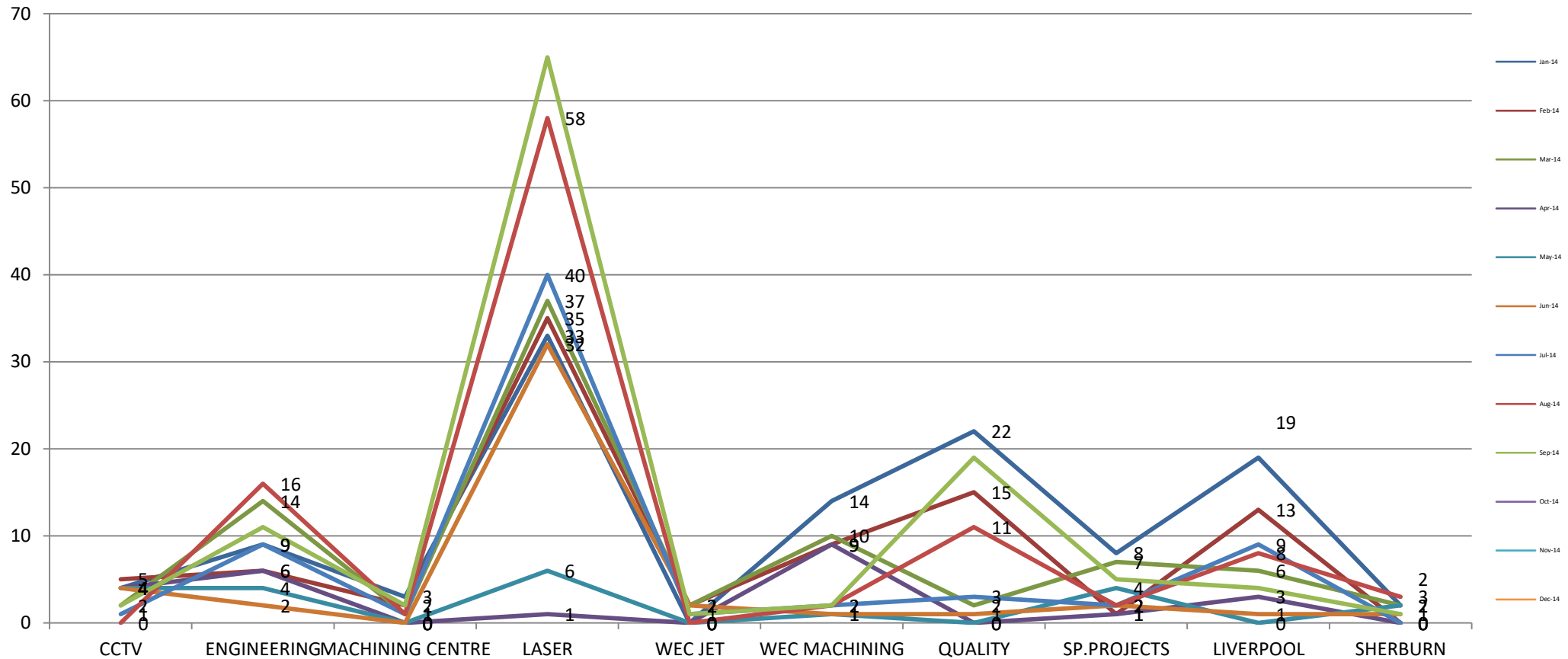
September 2020

Subject	Targets	Actions	Status	Trend
Audits, Events, Assessments Problems ( NCR's) Actions	Audits Overdue- none <0% Planning re-scheduled due to COVID -19 Audits done in 5750 and Engineering	Discuss with all departments QA's in the weekly Quality meeting to review all issues and close the complete one s. Average closure of 20 days.	complete	
Concessions	Expired without resolution none Extended without Action Plan -none Regular Reviews Review of NCR's for Laser department with closure of supplier's issues; New internal ncr's in Engineering		complete	
New/ amended/ deleted documents on Document Control Database	Revised system documents: Rail Manual procedures have been revised to revision 9 Awaiting signature > - none Pending: NONE		complete	
Calibration	Overdue : List with items outstanding in WEC Machining; Welding sets for HTA- all completed	Review with each department	complete	
Training & Competence	Competences & Assessments - outstanding: 7 Laser; 6- Special Projects ( new starters); HTA to adhere to WEC Training records	More new people and no assessments of competences/ address with head of departments – in top managers meeting	In progress	
Customer Satisfaction (Complaints, Surveys, etc.)	Satisfaction Surveys : good feed-back for panels manufactured for Mc Lasen ventilators ( certificate received)		complete	
Facilities Management	PPM Maintenance Overdue Tasks = none Unplanned tasks None	To the schedule	complete	
Org chart	Organisation Chart Changes to include HTA- org chart to rev. 16		complete	
Supplier Quality	Top 5 suppliers ( including remote sites)- PERFORMANCE AT 97 % ( suppliers with issues: Richard Austin, Premier Steel, United Steels)	Address by Purchasing with suppliers/ Quality meetings wit Laser Riverside on missing parts	complete	
Railway Safety Issue Resolution (Inc. Operational Safety)	Railway Safety Issues None/ No work for rail		complete	
EHS	Near misses YTD 69 Minor accidents YTD 51 Lost Time Accidents Recorded this month = 0 Accident rate = 3% Close Calls 0 ( no work for Rail) Environment No Issues	RIDDOR=4 ( 1-5750; 1-Eng;1-HTA;1-Sherburn	complete 2	

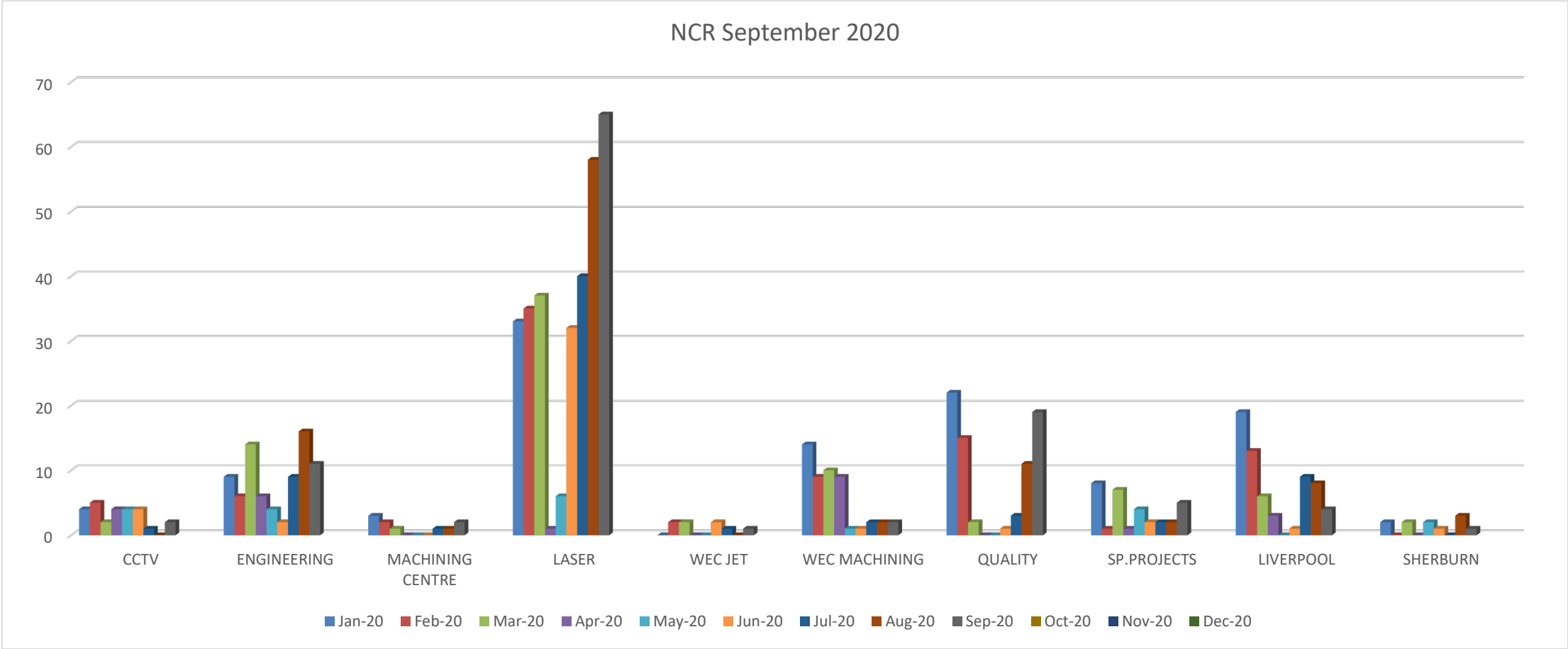
# Accidents/ incidents 2020



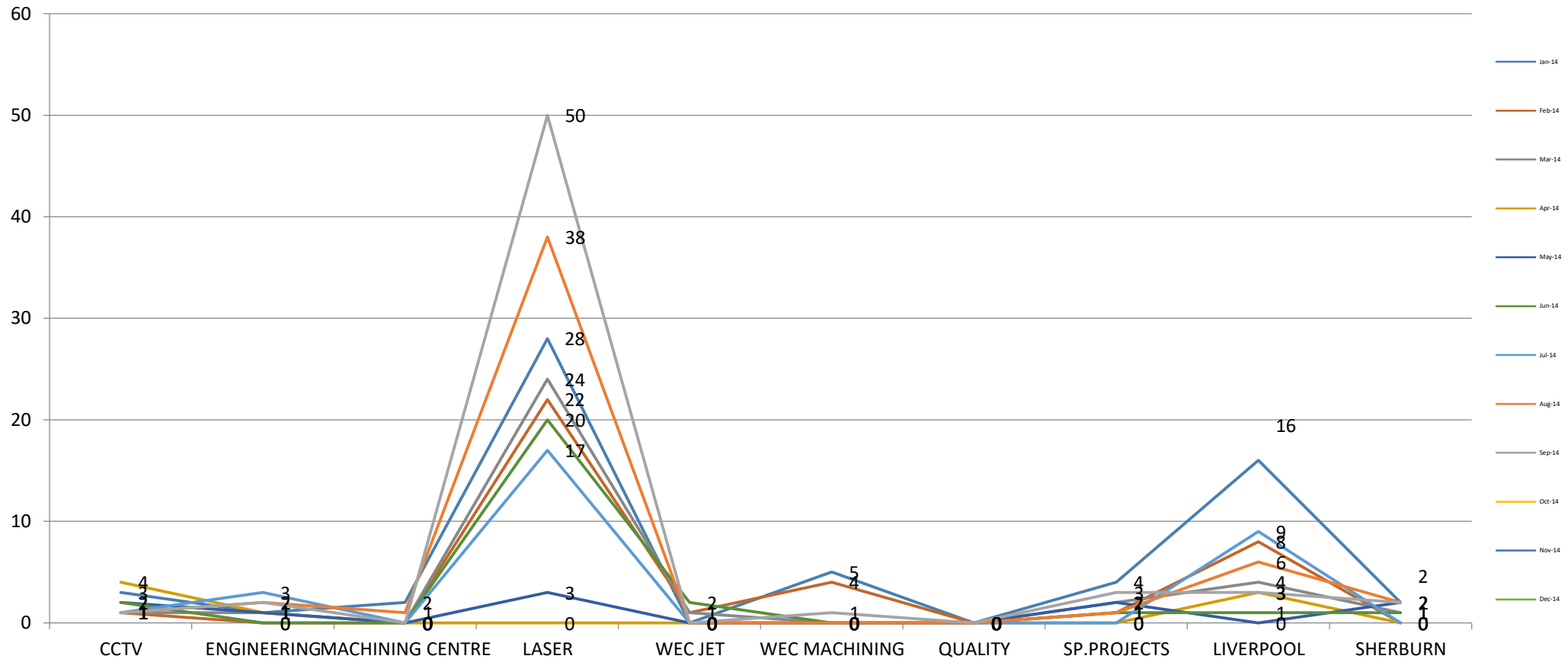
# NCR/customer complaints- September 2020



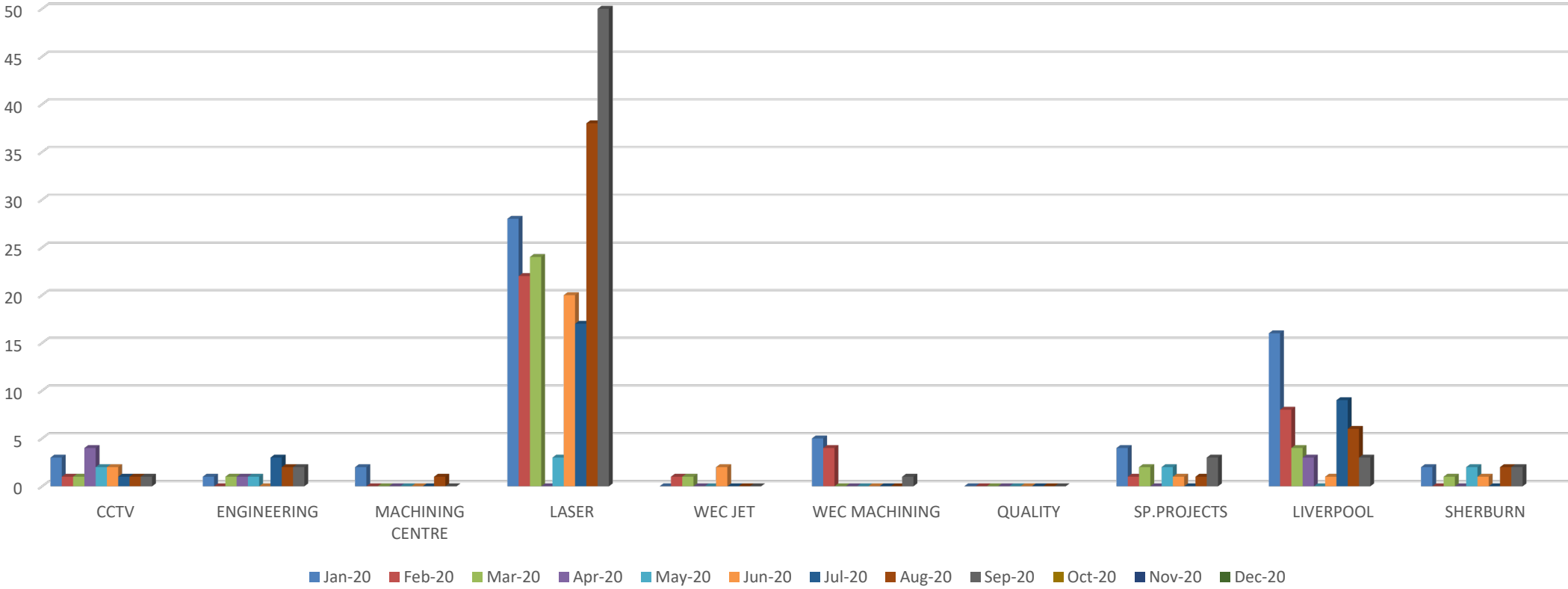
# Total NCR's September 2020



# Customer complaints YTD – September 2020

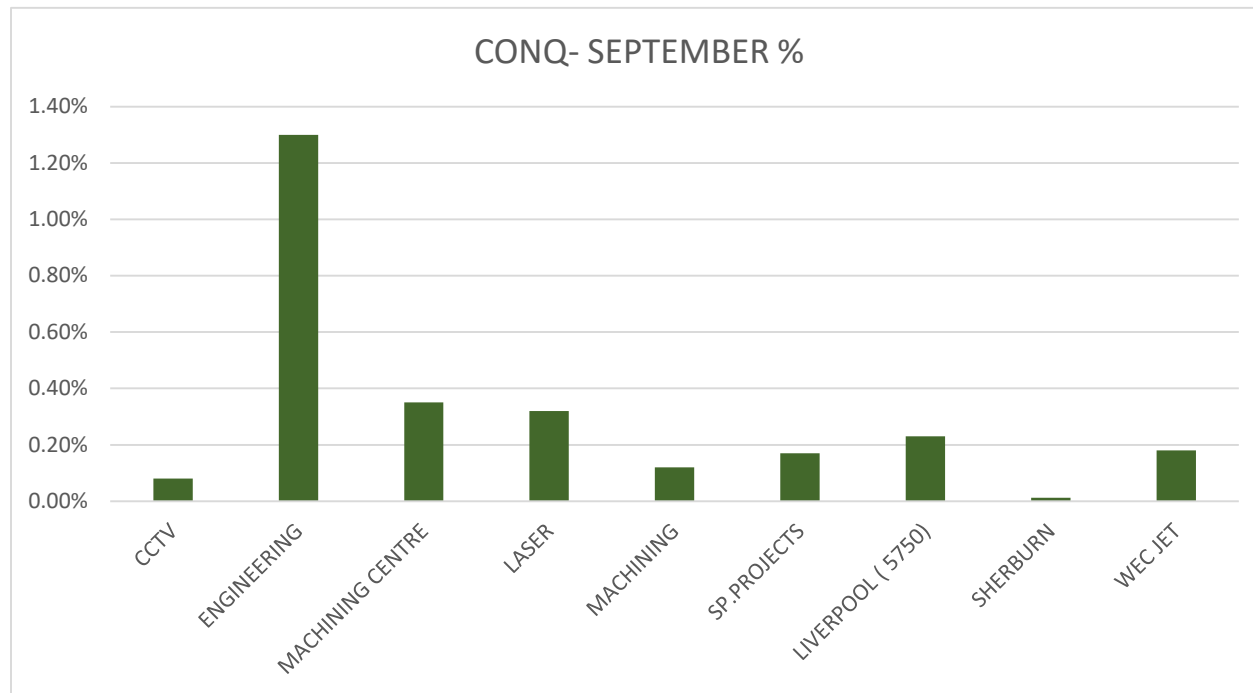


### CUSTOMER COMPLAINTS September 2020



# COST OF NON-QUALITY-YTD

To a target of <1%

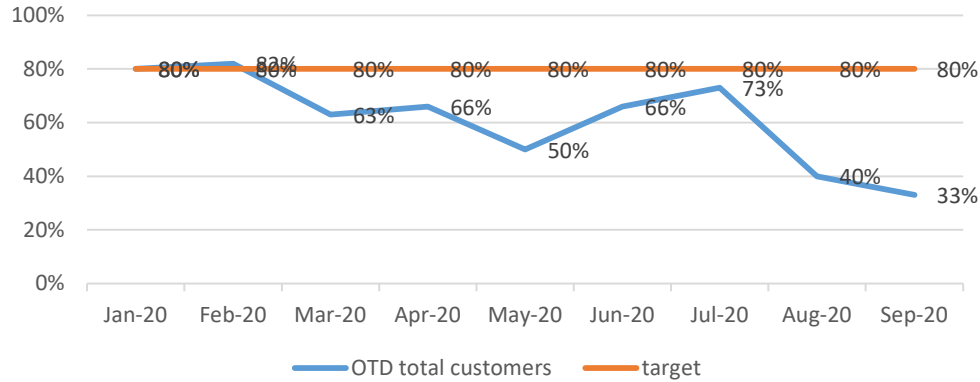


division	CONQ%
CCTV	0.08%
ENGINEERING	1.30%
MACHINING CENTRE	0.35%
LASER	0.32%
MACHINING	0.12%
SP.PROJECTS	0.17%
LIVERPOOL ( 5750)	0.23%
SHERBURN	0.01%
WEC JET	0.18%
TARGET	1%

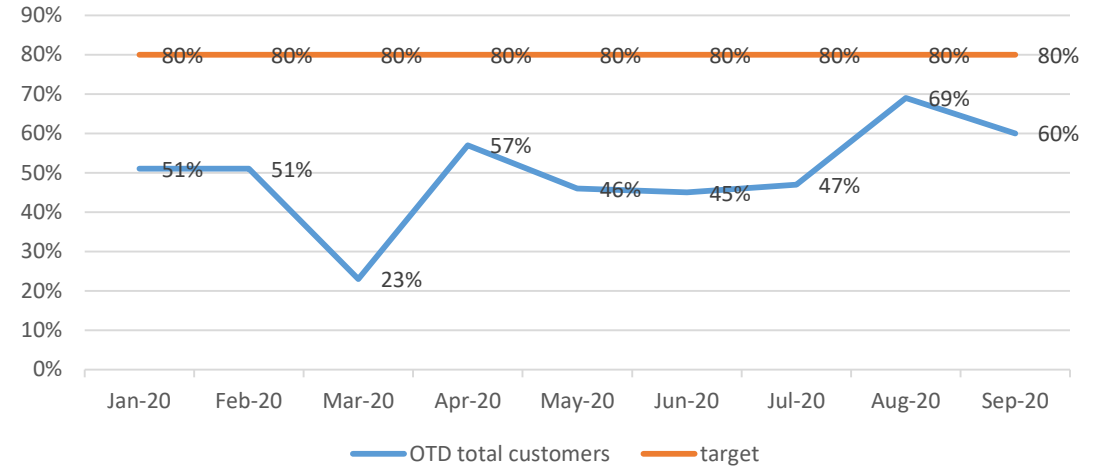


# OTD PER DEPARTMENT SEPTEMBER 2020

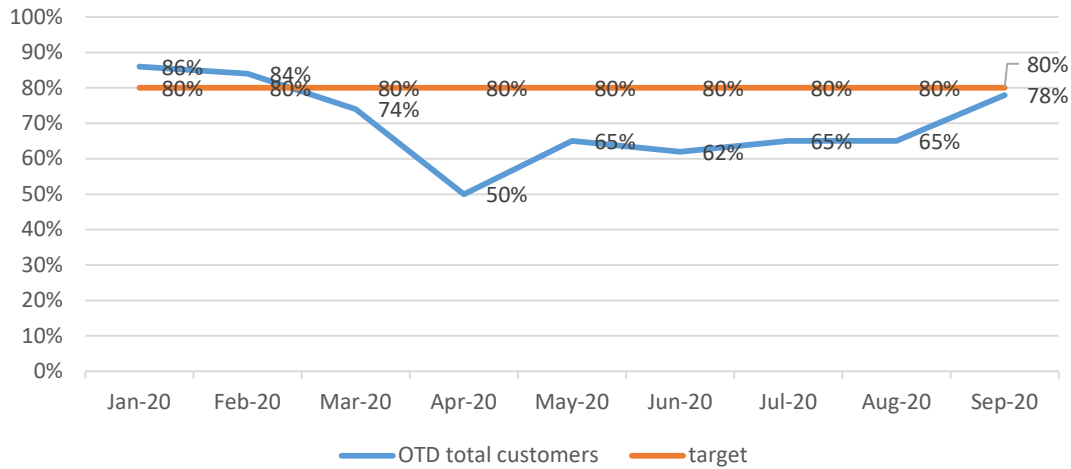
## OTD 5750



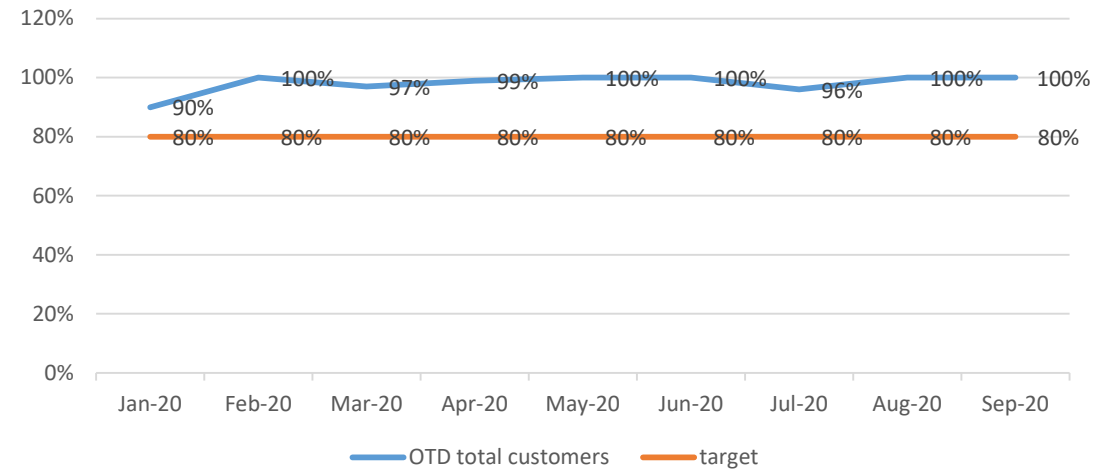
## OTD ENGINEERING



## OTD LASER

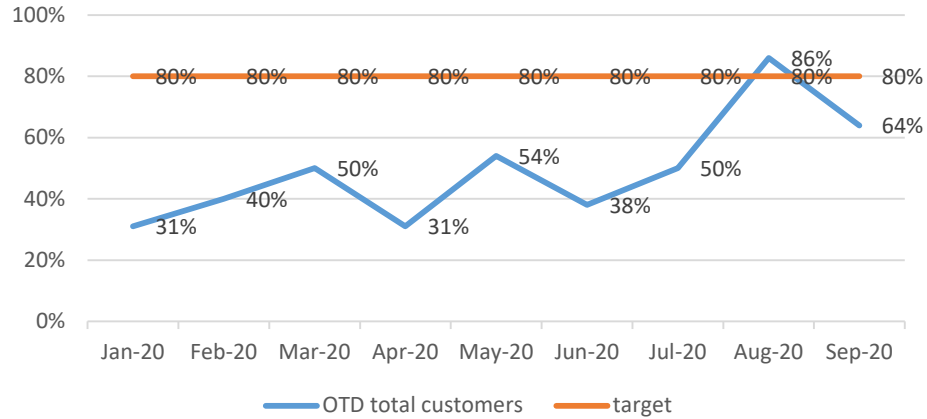


## OTD WEC JET

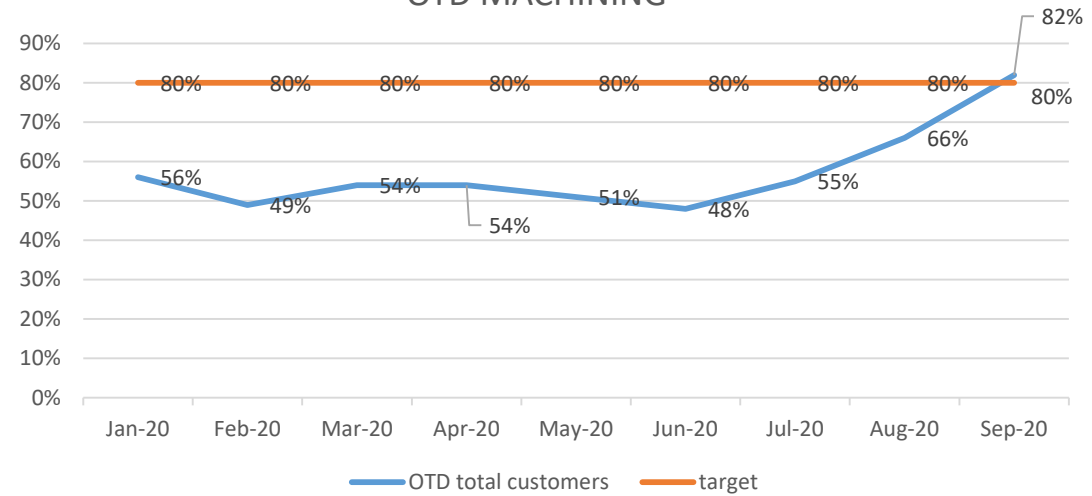


# OTD PER DEPARTMENT- SEPTEMBER 2020

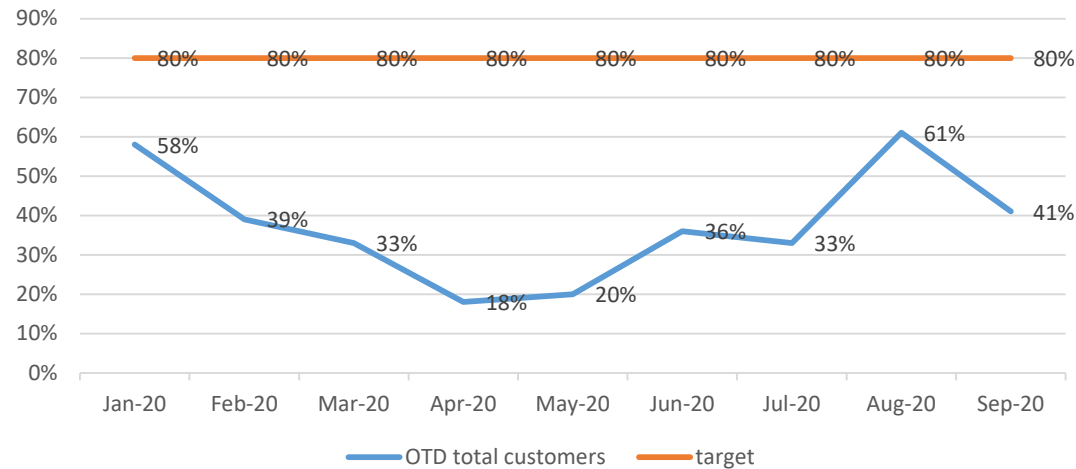
## OTD MACHINING CENTRE



## OTD MACHINING

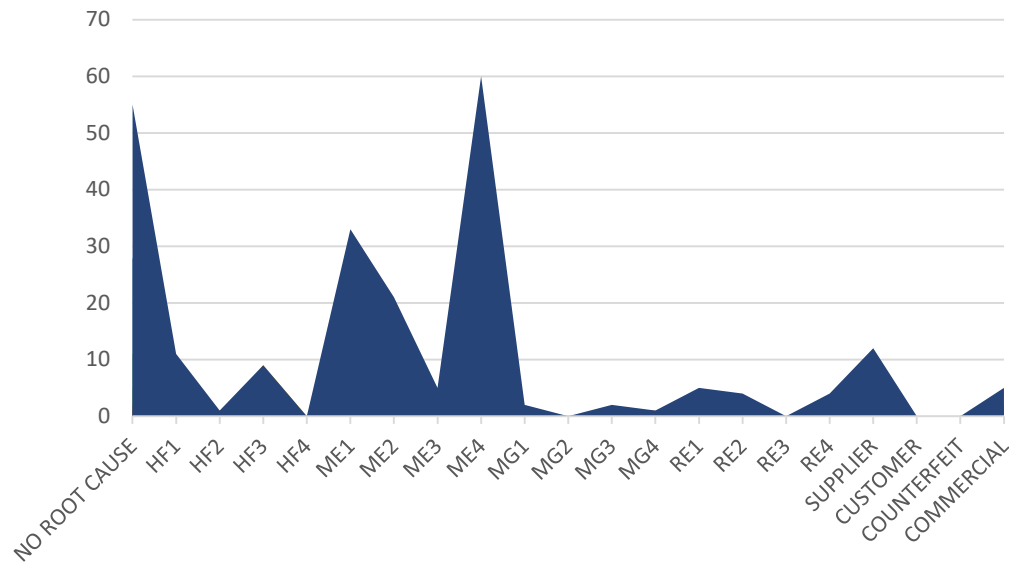


## OTD SPECIAL PROJECTS



# Root causes

ROOT CAUSES JANUARY- FEBRUARY YTD 2020																					
DEPARTMENT	NO ROOT CAUSE	HF1	HF2	HF3	HF4	ME1	ME2	ME3	ME4	MG1	MG2	MG3	MG4	RE1	RE2	RE3	RE4	SUPPLIER	CUSTOMER	COUNTERFEIT	COMMERCIAL
CCTV	5																				
ENGINEERING	1	2	1						2	1		1	1					6			1
MACHINING CENTRE	2	1							2					1							
LASER	4	3		9		23	13	4	11	1		1		1	2		2	1			2
WEC JET	1					1															
WEC MACHINING	11	3				1	1		2					1			2	3			
QUALITY	28					7	5		15					1	1						
SP.PROJECTS	1	2					2											2			2
LIVERPOOL( 5750)	2					1		1	28					1	1						
SHERBURN																					
<b>TOTAL WEC GROUP</b>	<b>55</b>	<b>11</b>	<b>1</b>	<b>9</b>	<b>0</b>	<b>33</b>	<b>21</b>	<b>5</b>	<b>60</b>	<b>2</b>	<b>0</b>	<b>2</b>	<b>1</b>	<b>5</b>	<b>4</b>	<b>0</b>	<b>4</b>	<b>12</b>	<b>0</b>	<b>0</b>	<b>5</b>



CauseGroup	RootCause	CauseCode	CauseTitle
Resources	RE1-Resources-IPC	RE1	Inadequate people capability
Resources	RE2-Resources-IOI	RE2	Inadequate operating infrastructure
Resources	RE3-Resources-IOE	RE3	Inadequate operating environment
Resources	RE4-Resources-IPE	RE4	Inadequate provision of equipment
Management	MG1-Management-LTP	MG1	Lack of training provision
Management	MG2-Management-URR	MG2	Unclear roles and responsibilities
Management	MG3-Management-IOG	MG3	Inadequate organisational governance
Management	MG4-Management-IC	MG4	Inadequate communication
Methods	ME1-Methods-LOPC	ME1	Lack of operational planning and control
Methods	ME2-Methods-IDI	ME2	Inadequate documented information
Methods	ME3-Methods-ICDI	ME3	Inadequate control of documented information
Methods	ME4-Methods-IVP	ME4	Inadequate verification or validation of process, product or service
Human Factors	HF1-HumanFactors-LC	HF1	Lack of attention or concentration
Human Factors	HF2-HumanFactors-PS	HF2	Pressure and stress
Human Factors	HF3-HumanFactors-D	HF3	Distraction
Human Factors	HF4-HumanFactors-F	HF4	Fatigue

# Suppliers performance YTD

WEC LASER	3.3
WEC Machining Center	0.7
BRITISH STEEL	1.3
VSN	1.0
NIPRO	1.0
HI-SPEC ( MACHINING)	1.3
AALCO	5.0
RICHARD AUSTIN	3.3
RIGHTON	1.7
ASD METAL SERVICES	1.3
PREMIER STEEL	1.3
UNITED STEELS	1.3

LEGEND : When a supplier reach 4 level-URGENT ACTION PLAN required

cumulated score September 2020

